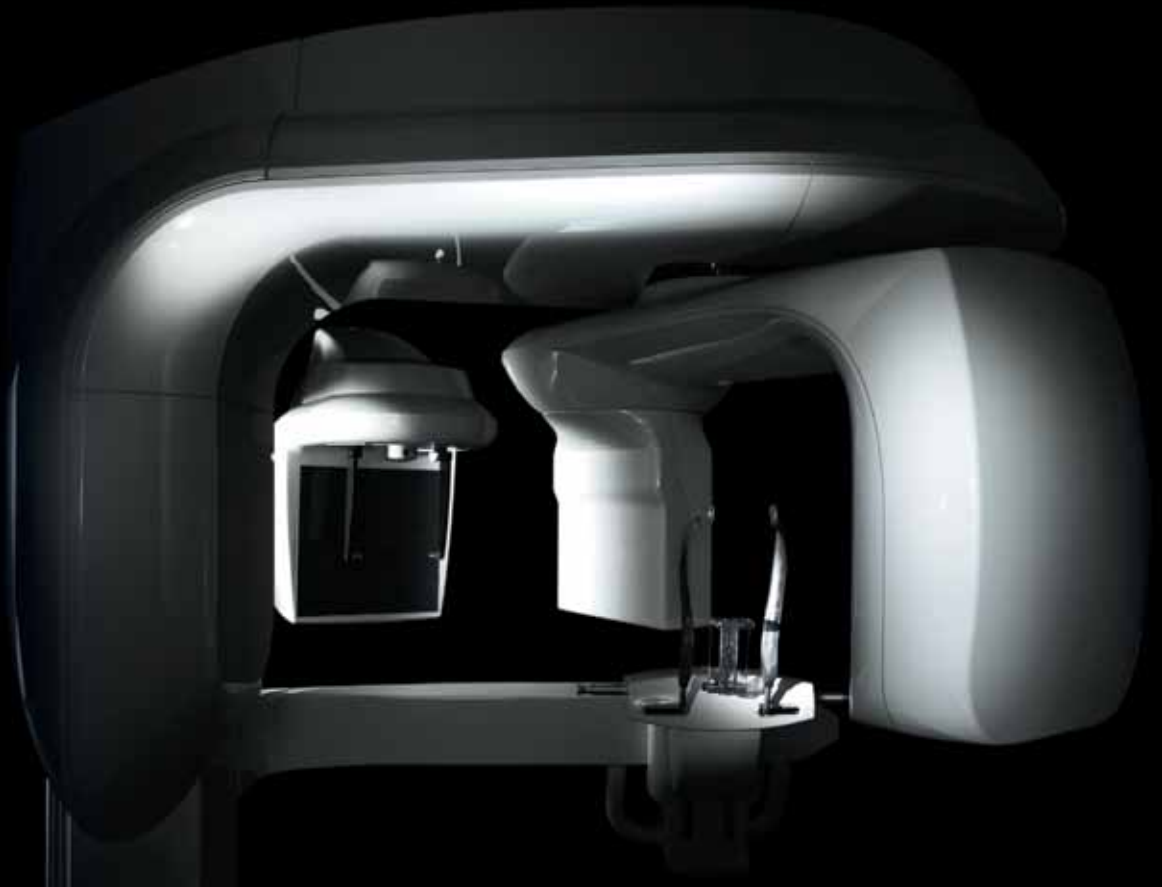


CS 9300C



## Multiple modalities, multiple fields of view

Imagine being able to perform all of your extraoral exams with one system. With the CS 9300C, you now can. Combining multiple fields of view technology with 2D digital panoramic and one-shot cephalometric imaging, this versatile CBCT system delivers outstanding images each time it's used—giving you the precise visual evidence you need to diagnose more effectively.

### Advantages at a glance

- Panoramic, 3D imaging, and one-shot cephalometric in one unit
- Covers widest scope of clinical applications
- 2D digital panoramic with variable focal trough
- Intelligent dose management through collimation
- Image resolution up to 90µm



## Designed for versatility

From exceptionally detailed focused-field images to larger views, the CS 9300C captures vivid, anatomically correct 3D images with each and every shot. Easily collimate field of view, adjust resolution, and change position according to your exam specifications—regardless of which modality you select, the unit provides all the details you need to make a confident diagnosis.

- Multiple fields of view ranging from 5 cm x 5 cm to 17 cm x 13.5 cm

## The one-shot difference

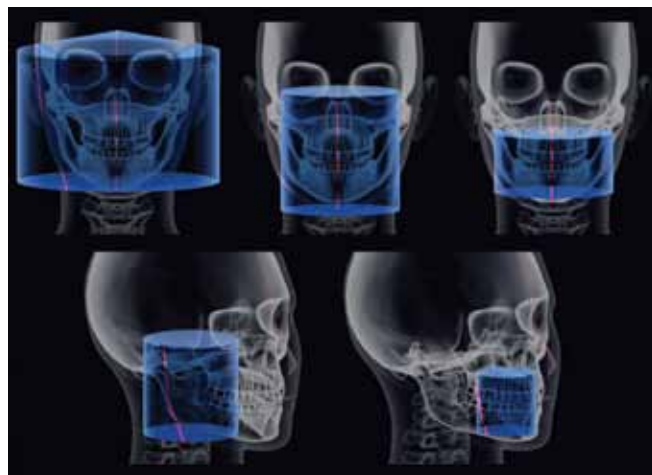
Capture top-quality cephalometric images in the blink of an eye with the CS 9300C. The system features our revolutionary one-shot technology to acquire cephalometric images in less than a second, minimizing image distortion and optimizing image quality. And, with the broadest range of cephalometric image formats in the industry, the system addresses all of your orthodontic diagnostic needs.

- One-shot image acquisition promotes optimal image quality, reduces exposure time, and risk of patient movement

## Where sophistication meets simplicity

With preset programs, motorized movements and a streamlined user interface, the CS 9300C is remarkably easy to use. Use the included imaging software to quickly access, review, and share images. Our exclusive landmark recognition software even automates orthodontic tracing in less than a minute, while “one-click” orthodontic enhancement filters optimize image clarity and outline soft tissue automatically.

- Full DICOM compliance ensures compatibility with third-party software such as SureSmile



Up to seven fields of view ranging from 5 cm x 5 cm to 17 cm x 13.5 cm.

## Technical Specifications

3D Modality	
Voxel size (µm):	90 to 500
Field of view (cm):	5x5, 8x8, 10x5, 10x10, 17x6, 17x11, 17x13.5
Panoramic Modality	
Exposure time:	4 to 16 seconds
Radiological exam options:	Panoramic, segmented panoramic, maxillary sinus, LA TMJ x 2, LA TMJ x 4
Cephalometric Modality	
Exposure time:	0.1 to 3.2 seconds
Radiological exam options:	Lateral, frontal AP or PA, oblique, submento-vertex, carpus
Acquisition format size (cm):	18x18, 18x24, 24x24, 24x30, 30x30
X-Ray Generator and Other Specifications	
Tube voltage:	60 - 90 kV
Tube current:	2 - 15 mA
Frequency:	140 kHz
Tube focal spot:	0.7 mm (IEC 60336)
Footprint:	With cephalostat: 2137 (L) x 1595 (D) x 2378 mm (H)

Warning: Class 2 laser product. Do not stare into the beam.

Explore more at [www.carestreamdental.com/9300](http://www.carestreamdental.com/9300) or call 800.944.6365 for more information about the CS 9300.

