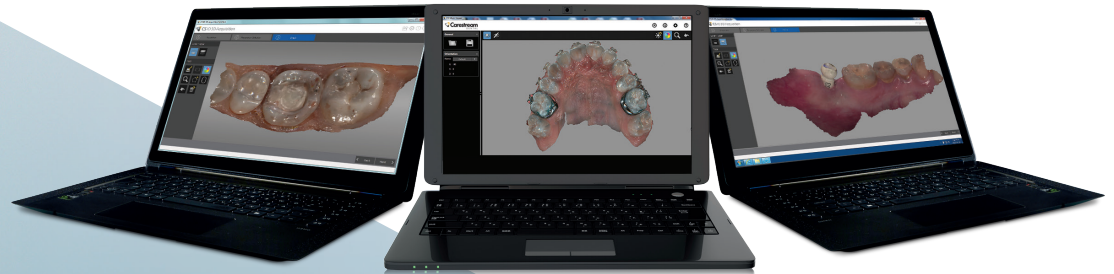


SCAN SMARTER EASIER. FASTER. OPEN.

We didn't invent the intraoral scanner. We reinvented it.

The CS 3600 intraoral scanner from Carestream Dental puts smarter scanning right in the palm of your hand. Whether your practice handles restorative, orthodontic or implant cases, the CS 3600 adapts to your needs and makes digital impression capture amazingly fast and easy.

The CS 3600's unique continuous scanning capabilities enable you to easily acquire all the essential data you need to create an impression in record time. The Intelligent Matching System allows you to fill in missing scan information for any area in the data set. Simply jump to any position in the mouth—there's no need to indicate an exact location or follow a specific direction.



NO FIXED DISTANCE

With a broad focal length, you can hover around, above or rest the scanner on a tooth, allowing you to choose how you scan.



INTELLIGENT MATCHING SYSTEM

With protocol-free scanning, you can start, stop or rescan from anywhere in the mouth.

"Since using the CS 3600, I've been impressed, not only with the speed, but with the accuracy of the scanner."

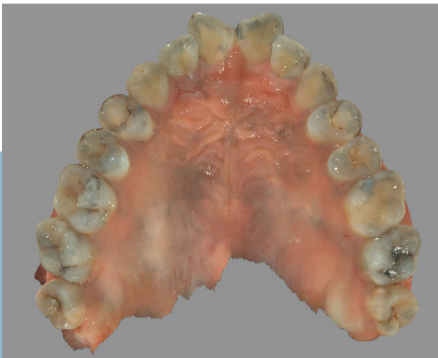
**DR. MARK CAUSEY,
CAUSEY ORTHODONTICS,
CUMMING, GA**

FEATURES THAT MAKE YOUR PATIENTS— AND YOU—SMILE

The CS 3600 is available with two tip configurations. The normal tip is ideal for general scanning, while the interchangeable side-oriented tip is specifically designed to scan difficult-to-reach areas like the buccal and occlusal surfaces. Both styles are autoclavable and can be used up to 20 times.

The CS 3600 produces highly accurate full HD 3D color images with enhanced quality and texture, which facilitates doctor/patient communication and increases case acceptance.

- ▶ STREAMLINED WORKFLOW**
Choose from three dedicated continuous scanning workflows: restorative, orthodontic and implant-borne restorative.
- ▶ OPEN SYSTEM FLEXIBILITY**
Enjoy clearer communication with your lab with the versatility of DICOM, exocad dentalProject, open .STL, .PLY, and .UDX file outputs.
- ▶ USER-FRIENDLY DIGITAL WORKFLOW**
Transition easily to digital with an intuitive, guided step-by-step user interface.
- ▶ SUPERIOR, MORE REFINED IMPRESSIONS**
Remove any excess scanned tissue as needed; complete any missing data without restarting the scanning process.
- ▶ ACCURACY AT YOUR FINGERTIPS**
The CS 3600 delivers highly accurate clinical images, facilitating precise clinical results.
- ▶ ADVANCED ERGONOMIC DESIGN**
Improve image capture and patient comfort with two rounded, interchangeable tips and the shortest autoclavable tip height on the market.



CS 3600

© Carestream Health, Inc. 2016.
15061 CAN CS 3600 SS 0117 CHSP-8807; Rev: 1

carestreamdental.com

855.762.2291